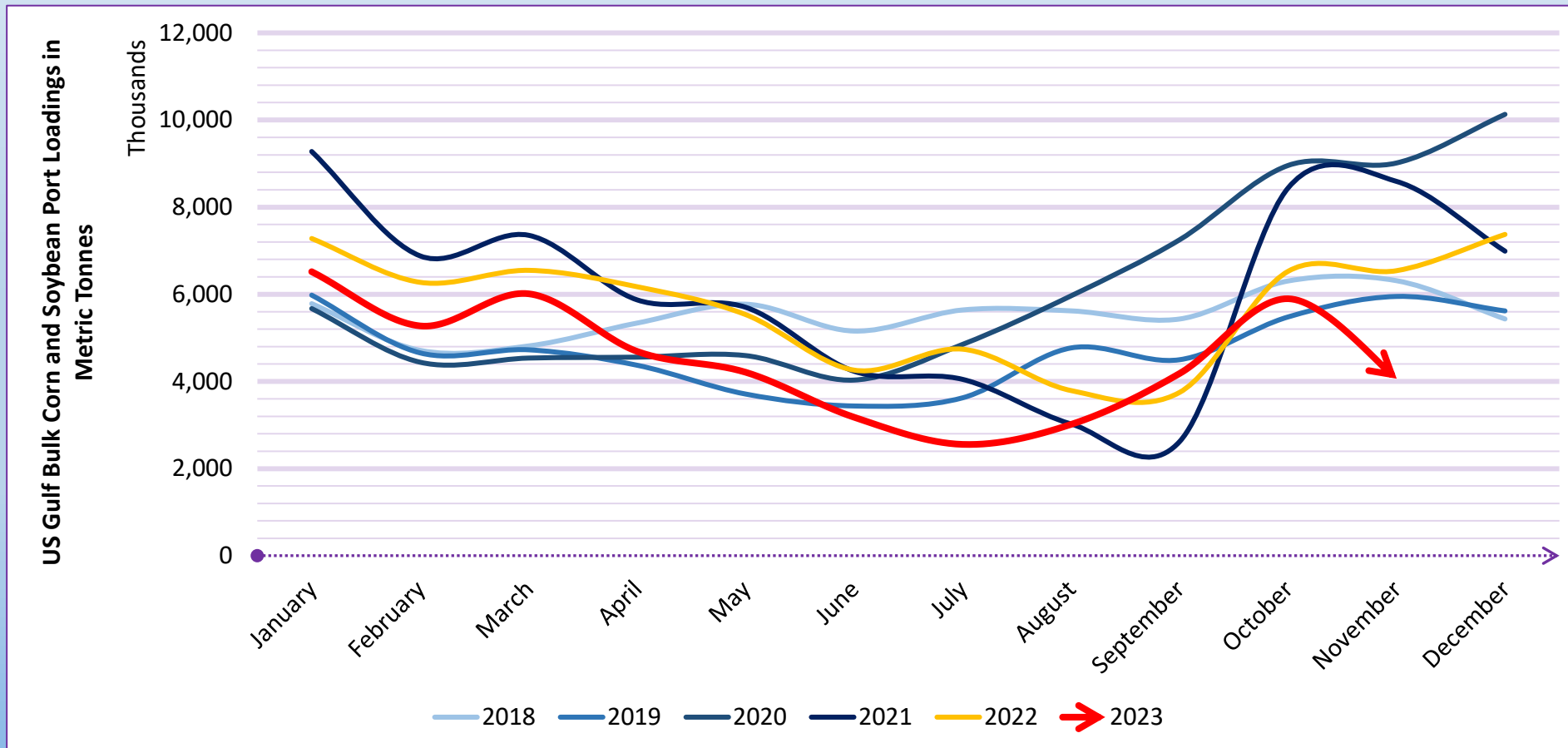


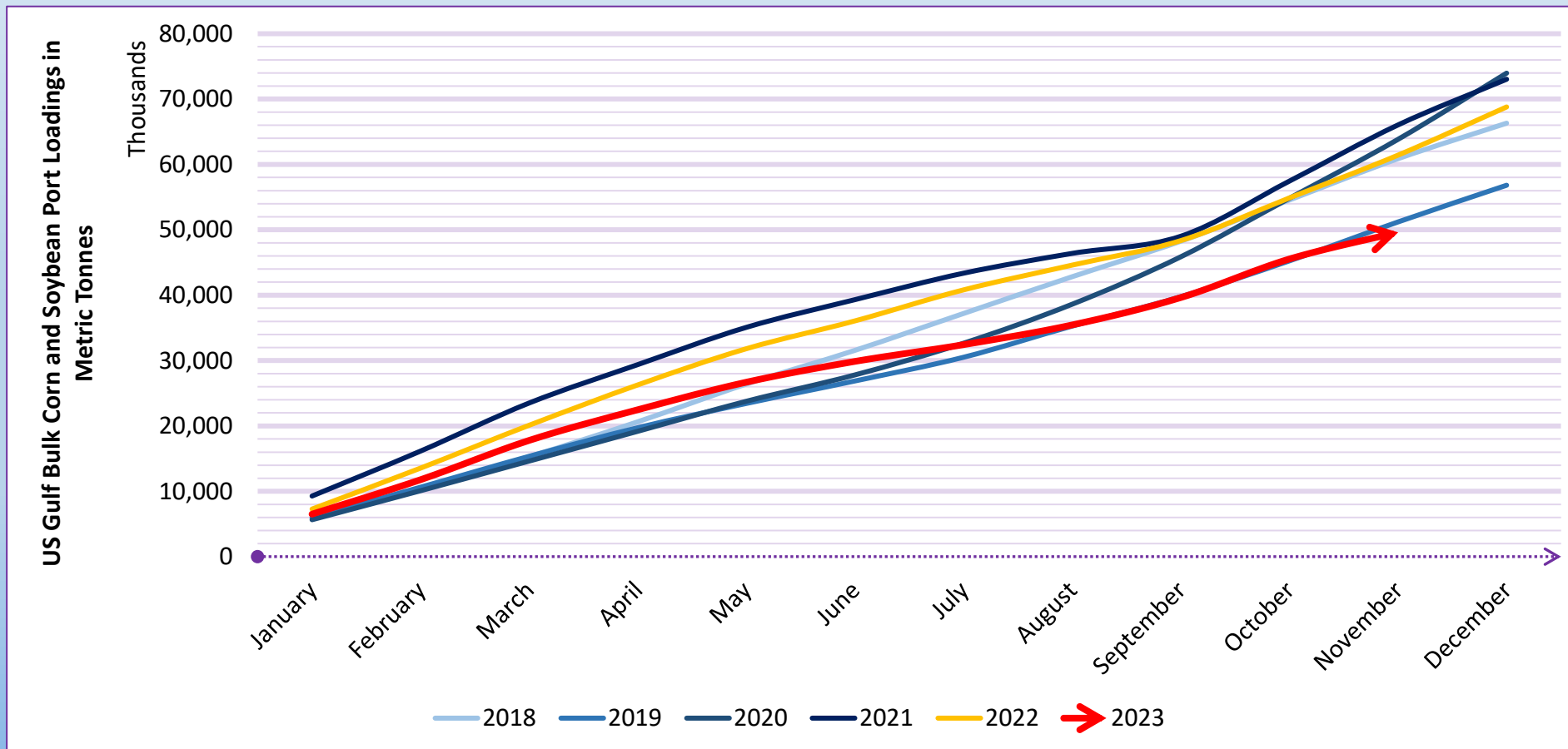
Comparative Analysis of US Gulf and East Coast South America Corn and Soybean Exports (2018-2023)

We are analyzing historical AIS vessel movement data from AXSMarine. This analysis demonstrates the annual monthly comparison of bulk corn and soybean exports from ports in the US Gulf and East Coast South America. The data includes all vessel sizes and ages involved in international trade, covering the period from 2018 to 2023. Additionally, we present a cumulative annual monthly comparison of these metrics.

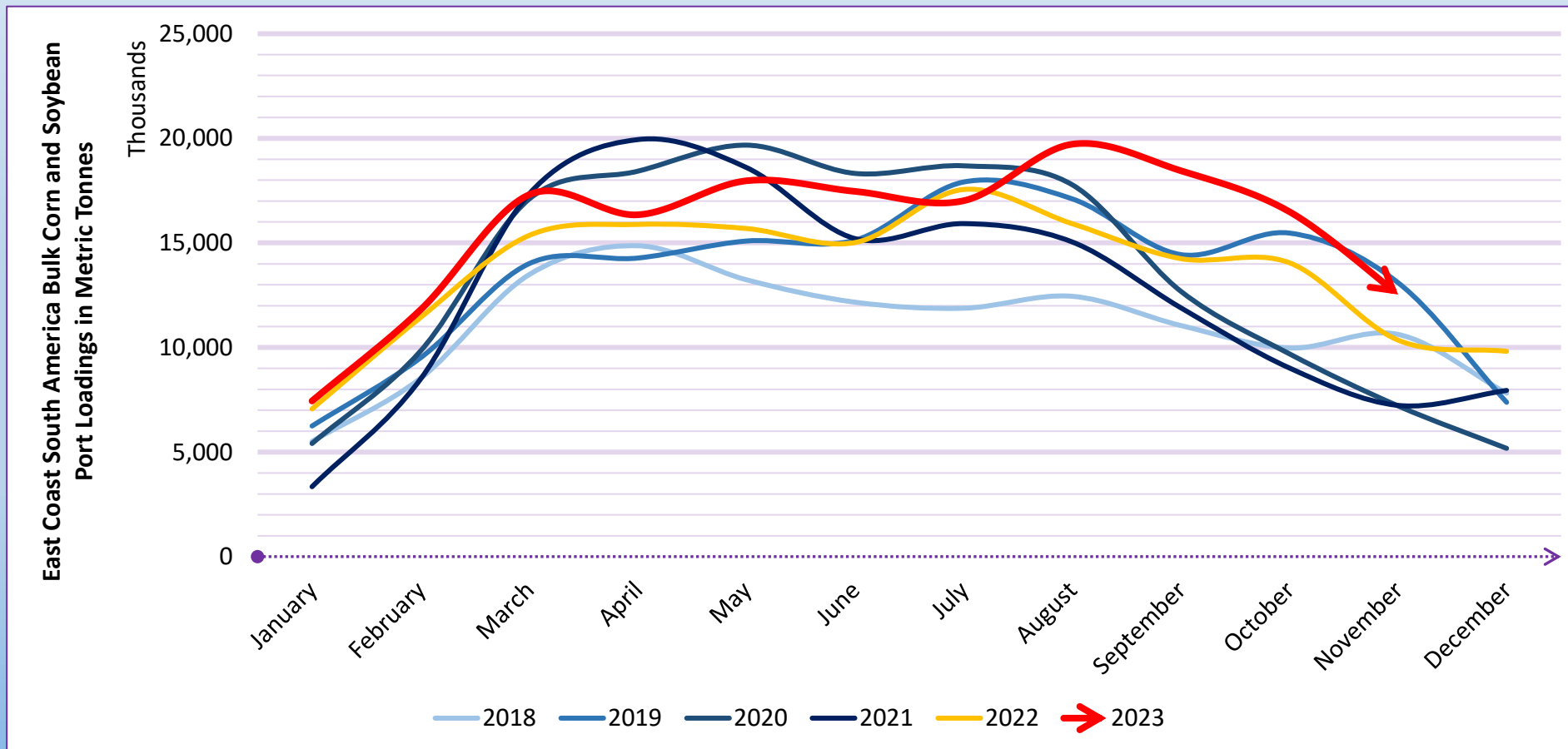
Annual Comparison of US Gulf Bulk Corn and Soybean Seaborne Exports



Annual Comparison of Cumulative US Gulf Bulk Corn and Soybean Seaborne Exports



Annual Comparison of East Coast South America Bulk Corn and Soybean Seaborne Exports



Annual Comparison of Cumulative East Coast South America Bulk Corn and Soybean Seaborne Exports

